

**LSU**  
**Deposit and Collateral Report**  
**For the Quarter Ended June 30, 2021**

Deposits Requiring Posting of Collateral:	Demand Deposit Sweep/MMA Repurchase	Certificates of Deposit	Total Deposits in Financial Institutions	Collateral (1)
<b>LSU A&amp;M, LSU Alexandria, LSU Eunice, LSU Shreveport, and LSU Health New Orleans</b>				
Chase - LSU, Health Plan Premium	\$ 106,740,319		\$ 106,740,319	\$ 186,000,000
Cottonport Bank - LSU Ag Center	2,378,941		2,378,941	2,658,181
Capital One - LSU-A	5,440,757		5,440,757	5,440,757
St. Landry Bank - LSU-E	629,484		629,484	1,009,257
Campus Federal Credit Union - LSU-S		\$ 100,494	100,494	250,000
Capital One - LSU-S	36,188,680		36,188,680	36,657,454
Chase - HSCNO	66,756,540	18,600	66,775,140	91,055,988
<b>Total</b>	<b>\$ 218,134,721</b>	<b>\$ 119,094</b>	<b>\$ 218,253,815</b>	<b>\$ 323,071,637</b>
<b>LSU Health Shreveport</b>				
JPMC-Shreveport	\$ 59,622,887		\$ 59,622,887	\$ 100,504,186
JPMC-Shreveport Endowment Fds	835,778		835,778	
<b>Total</b>	<b>\$ 60,458,665</b>	<b>\$ -</b>	<b>\$ 60,458,665</b>	<b>\$ 100,504,186</b>
<b>LSU Health Care Services Division</b>				
JP Morgan Chase (HCSD)	\$ 78,547,289		\$ 78,547,289	\$ 86,000,000
Capital One (MCLNO Trust Fund)	4,172,625		4,172,625	4,251,078
<b>Total</b>	<b>\$ 82,719,914</b>	<b>\$ -</b>	<b>\$ 82,719,914</b>	<b>\$ 90,251,078</b>
<b>Total Requiring Collateral</b>	<b>\$ 361,313,300</b>	<b>\$ 119,094</b>	<b>\$ 361,432,394</b>	<b>\$ 513,826,901</b>
<b>Deposits In Trust or Federal Obligations Not Requiring Collateral</b>				
Federated Money Markets	\$ 8,908,564		\$ 8,908,564	
Federated Funds-Treas. Oblig. (2)	23,054,339		23,054,339	
<b>Total</b>	<b>\$ 31,962,903</b>	<b>\$ -</b>	<b>\$ 31,962,903</b>	
<b>Total Deposits</b>	<b>\$ 393,276,203</b>	<b>\$ 119,094</b>	<b>\$ 393,395,297</b>	

(1) Collateral amounts include FDIC coverage of \$250,000 on Demand Deposits, \$250,000 on CD's and \$250,000 by the National Credit Union Share Insurance Fund on deposits with Campus Federal Credit Union.

(2) One Group & Federated Funds are no-load, open ended mutual funds investing in U.S. Treasury obligations.

LSU  
Investment Summary  
For the Quarter Ended June 30, 2021

Fund Description	As of 7/1/2020	As of 9/30/2020		As of 12/31/2020		As of 3/31/2021		As of 06/30/2021	
	Value	Cost	Market Value	Cost	Market Value	Cost	Market Value	Cost	Market Value
<b>Current Funds</b>									
Cash/Sweeps	\$375,120,082	\$580,056,212	\$580,056,212	\$547,947,589	\$547,947,589	\$499,196,022	\$499,196,022	\$356,304,897	\$356,304,897
Money Market Accounts/Repos	\$0	\$8,930,221	\$8,930,221	\$8,058,226	\$8,058,226	\$527,464	\$527,464	\$0	\$0
Certificates of Deposit	\$100,413	\$100,411	\$100,411	\$100,455	\$100,455	\$100,455	\$100,455	\$100,494	\$100,494
Treasury Notes	\$34,083,826	\$33,261,475	\$34,653,588	\$34,100,069	\$35,307,018	\$57,667,282	\$58,109,987	\$57,694,689	\$58,379,096
CMO's	\$13,289,523	\$12,690,922	\$12,715,426	\$12,113,675	\$12,137,860	\$11,617,305	\$11,670,077	\$11,054,214	\$11,112,330
Agency Securities	\$54,110,875	\$67,077,178	\$68,724,705	\$68,351,528	\$69,745,410	\$108,151,280	\$106,291,332	\$108,063,846	\$107,435,239
Mortgaged Backed Securities	\$42,826,102	\$39,274,622	\$39,830,857	\$12,615,757	\$12,896,709	\$11,100,335	\$11,221,877	\$10,396,241	\$10,587,622
Equity Securities	\$55,912	\$0	\$56,907	\$0	\$71,880	\$0	\$93,069	\$0	\$91,630
Municipal Bonds	\$118,337,558	\$119,421,589	\$121,288,094	\$154,584,896	\$155,773,477	\$191,223,906	\$187,336,284	\$186,181,341	\$185,832,665
Corporate Bonds	\$159,589,112	\$140,372,399	\$148,885,753	\$148,378,235	\$158,838,357	\$184,606,744	\$186,762,130	\$189,175,304	\$194,189,145
<b>Total</b>	<b>\$797,513,403</b>	<b>\$1,001,185,029</b>	<b>\$1,015,242,174</b>	<b>\$986,250,430</b>	<b>\$1,000,876,981</b>	<b>\$1,064,190,793</b>	<b>\$1,061,308,697</b>	<b>\$918,971,026</b>	<b>\$924,033,118</b>
<b>Endowment Funds</b>									
Cash/Sweeps	\$1,428,396	\$1,284,010	\$1,284,010	\$1,277,467	\$1,277,467	\$1,219,304	\$1,219,304	\$835,778	\$835,778
Money Market Accounts/Repos	\$36,872	\$791,886	\$791,886	\$534,617	\$534,617	\$138,786	\$138,786	\$0	\$0
Certificates of Deposit	\$18,600	\$18,600	\$18,600	\$18,600	\$18,600	\$18,600	\$18,600	\$18,600	\$18,600
Agency Securities	\$1,380,320	\$1,315,805	\$1,379,514	\$1,315,805	\$1,373,161	\$2,481,905	\$2,486,483	\$2,481,905	\$2,522,679
Mortgaged Backed Securities	\$1,608,820	\$1,411,674	\$1,518,819	\$1,406,900	\$1,515,269	\$1,212,575	\$1,293,263	\$1,207,811	\$1,290,319
Equity Securities	\$9,965,087	\$5,028,188	\$9,995,603	\$4,816,366	\$10,521,975	\$4,904,145	\$11,064,553	\$4,677,373	\$10,979,120
Mutual Funds	\$67,050,161	\$60,529,377	\$69,560,847	\$63,376,325	\$75,276,849	\$64,551,193	\$75,584,518	\$65,395,397	\$78,578,072
Municipal Bonds	\$2,769,136	\$2,689,578	\$2,781,804	\$4,256,683	\$4,326,428	\$4,256,683	\$4,171,869	\$4,275,828	\$4,237,198
Corporate Bonds	\$8,780,099	\$8,727,513	\$9,376,642	\$8,235,273	\$8,922,543	\$7,740,857	\$8,061,838	\$7,835,152	\$8,265,808
<b>Total</b>	<b>\$93,037,491</b>	<b>\$81,796,631</b>	<b>\$96,707,725</b>	<b>\$85,238,036</b>	<b>\$103,766,909</b>	<b>\$86,524,048</b>	<b>\$104,039,214</b>	<b>\$86,727,844</b>	<b>\$106,727,574</b>
<b>Other Funds</b>									
Cash/Sweeps	\$4,798,073	\$3,698,689	\$3,698,689	\$3,940,264	\$3,940,264	\$4,064,341	\$4,064,341	\$4,172,625	\$4,172,625
Money Market Accounts/Repos	\$31,382,800	\$9,217,020	\$9,217,020	\$16,539,474	\$16,539,474	\$9,294,439	\$9,294,439	\$31,962,903	\$31,962,903
Equity Securities	\$221,811	\$0	\$170,277	\$0	\$209,411	\$0	\$276,917	\$0	\$312,877
<b>Total</b>	<b>\$36,402,684</b>	<b>\$12,915,709</b>	<b>\$13,085,986</b>	<b>\$20,479,738</b>	<b>\$20,689,149</b>	<b>\$13,358,780</b>	<b>\$13,635,697</b>	<b>\$36,135,528</b>	<b>\$36,448,405</b>
<b>Grand Total</b>	<b>\$926,953,578</b>	<b>\$1,095,897,369</b>	<b>\$1,125,035,885</b>	<b>\$1,091,968,204</b>	<b>\$1,125,333,039</b>	<b>\$1,164,073,621</b>	<b>\$1,178,983,608</b>	<b>\$1,041,834,398</b>	<b>\$1,067,209,097</b>
<b>Deposits in Financial Institutions</b>									
Total Cash/Sweeps/MMA/Repos	\$412,766,223	\$603,978,038	\$603,978,038	\$578,297,637	\$578,297,637	\$514,440,356	\$514,440,356	\$393,276,203	\$393,276,203
Total Certificates of Deposit	\$119,013	\$119,011	\$119,011	\$119,055	\$119,055	\$119,055	\$119,055	\$119,094	\$119,094
<b>Total Deposits</b>	<b>\$412,885,236</b>	<b>\$604,097,049</b>	<b>\$604,097,049</b>	<b>\$578,416,692</b>	<b>\$578,416,692</b>	<b>\$514,559,411</b>	<b>\$514,559,411</b>	<b>\$393,395,297</b>	<b>\$393,395,297</b>
<b>Other Investments</b>									
Treasury Notes	\$34,083,826	\$33,261,475	\$34,653,588	\$34,100,069	\$35,307,018	\$57,667,282	\$58,109,987	\$57,694,689	\$58,379,096
CMO's	\$13,289,523	\$12,690,922	\$12,715,426	\$12,113,675	\$12,137,860	\$11,617,305	\$11,670,077	\$11,054,214	\$11,112,330
Agency Securities	\$55,491,195	\$68,392,983	\$70,104,219	\$69,667,333	\$71,118,571	\$110,633,185	\$108,777,815	\$110,545,751	\$109,957,918
Mortgaged Backed Securities	\$44,434,922	\$40,686,296	\$41,349,676	\$14,022,657	\$14,411,978	\$12,312,910	\$12,515,140	\$11,604,052	\$11,877,941
Equity Securities	\$10,242,810	\$5,028,188	\$10,222,787	\$4,816,366	\$10,803,266	\$4,904,145	\$11,434,539	\$4,677,373	\$11,383,627
Mutual Funds	\$67,050,161	\$60,529,377	\$69,560,847	\$63,376,325	\$75,276,849	\$64,551,193	\$75,584,518	\$65,395,397	\$78,578,072
Municipal Bonds	\$121,106,694	\$122,111,167	\$124,069,898	\$158,841,579	\$160,099,905	\$195,480,589	\$191,508,153	\$190,457,169	\$190,069,863
Corporate Bonds	\$168,369,211	\$149,099,912	\$158,262,395	\$156,613,508	\$167,760,900	\$192,347,601	\$194,823,968	\$197,010,456	\$202,454,953
<b>Total Other</b>	<b>\$514,068,342</b>	<b>\$491,800,320</b>	<b>\$520,938,836</b>	<b>\$513,551,512</b>	<b>\$546,916,347</b>	<b>\$649,514,210</b>	<b>\$664,424,197</b>	<b>\$648,439,101</b>	<b>\$673,813,800</b>
<b>Grand Total</b>	<b>\$926,953,578</b>	<b>\$1,095,897,369</b>	<b>\$1,125,035,885</b>	<b>\$1,091,968,204</b>	<b>\$1,125,333,039</b>	<b>\$1,164,073,621</b>	<b>\$1,178,983,608</b>	<b>\$1,041,834,398</b>	<b>\$1,067,209,097</b>
<b>LSU Paid Campuses</b>									
<b>Current Funds</b>									
Cash/Sweeps	\$233,311,025	\$414,498,300	\$414,498,300	\$352,149,478	\$352,149,478	\$334,112,304	\$334,112,304	\$218,134,721	\$218,134,721
Money Market Accounts/Repos	\$0	\$8,930,221	\$8,930,221	\$8,058,226	\$8,058,226	\$527,464	\$527,464	\$0	\$0
Certificates of Deposit	\$100,413	\$100,411	\$100,411	\$100,455	\$100,455	\$100,455	\$100,455	\$100,494	\$100,494
Treasury Notes	\$0	\$0	\$0	\$0	\$0	\$9,920,312	\$9,815,600	\$9,920,312	\$9,970,312
CMO's	\$13,289,523	\$12,690,922	\$12,715,426	\$12,113,675	\$12,137,860	\$11,617,305	\$11,670,077	\$11,054,214	\$11,112,330
Agency Securities	\$47,010,006	\$61,971,133	\$63,641,495	\$63,267,989	\$64,708,163	\$96,796,768	\$95,095,029	\$96,731,432	\$96,129,062
Mortgaged Backed Securities	\$42,813,155	\$39,261,335	\$39,818,037	\$12,602,605	\$12,884,013	\$11,087,344	\$11,209,325	\$10,383,408	\$10,575,505
Equity Securities	\$55,912	\$0	\$56,907	\$0	\$71,880	\$0	\$93,069	\$0	\$91,630
Municipal Bonds	\$110,753,126	\$111,212,249	\$112,961,740	\$141,501,351	\$143,682,671	\$171,380,036	\$167,740,635	\$166,372,659	\$166,096,612
Corporate Bonds	\$127,532,047	\$110,145,502	\$116,902,723	\$109,399,635	\$117,049,450	\$139,306,860	\$140,598,332	\$143,981,990	\$147,910,074
<b>Total</b>	<b>\$574,865,207</b>	<b>\$758,810,073</b>	<b>\$769,625,260</b>	<b>\$699,193,414</b>	<b>\$710,842,196</b>	<b>\$774,848,848</b>	<b>\$770,962,290</b>	<b>\$656,679,230</b>	<b>\$660,120,740</b>
<b>Endowment Funds</b>									
Money Market Accounts/Repos	\$36,872	\$791,886	\$791,886	\$534,617	\$534,617	\$138,786	\$138,786	\$0	\$0
Certificates of Deposit	\$18,600	\$18,600	\$18,600	\$18,600	\$18,600	\$18,600	\$18,600	\$18,600	\$18,600
Agency Securities	\$1,380,320	\$1,315,805	\$1,379,514	\$1,315,805	\$1,373,161	\$2,481,905	\$2,486,483	\$2,481,905	\$2,522,679
Mortgaged Backed Securities	\$1,608,820	\$1,411,674	\$1,518,819	\$1,406,900	\$1,515,269	\$1,212,575	\$1,293,263	\$1,207,811	\$1,290,319
Equity Securities	\$9,948,283	\$5,020,538	\$9,978,358	\$4,808,716	\$10,504,405	\$4,896,495	\$11,046,681	\$4,669,723	\$10,961,272
Municipal Bonds	\$2,769,136	\$2,689,578	\$2,781,804	\$4,256,683	\$4,326,428	\$4,256,683	\$4,171,869	\$4,275,828	\$4,237,198
Corporate Bonds	\$8,780,099	\$8,727,513	\$9,376,642	\$8,235,273	\$8,922,543	\$7,740,857	\$8,061,838	\$7,835,152	\$8,265,808
<b>Total</b>	<b>\$24,542,130</b>	<b>\$19,975,594</b>	<b>\$25,845,623</b>	<b>\$20,576,594</b>	<b>\$27,195,023</b>	<b>\$20,745,901</b>	<b>\$27,217,520</b>	<b>\$20,489,019</b>	<b>\$27,295,876</b>
<b>Other Funds</b>									
Money Market Accounts/Repos	\$22,490,726	\$320,912	\$320,912	\$7,639,359	\$7,639,359	\$390,328	\$390,328	\$23,054,339	\$23,054,339
<b>Total</b>	<b>\$22,490,726</b>	<b>\$320,912</b>	<b>\$320,912</b>	<b>\$7,639,359</b>	<b>\$7,639,359</b>	<b>\$390,328</b>	<b>\$390,328</b>	<b>\$23,054,339</b>	<b>\$23,054,339</b>
<b>Grand Total</b>	<b>\$621,898,063</b>	<b>\$779,106,579</b>	<b>\$795,791,795</b>	<b>\$727,409,367</b>	<b>\$745,676,578</b>	<b>\$795,985,077</b>	<b>\$798,570,138</b>	<b>\$700,222,588</b>	<b>\$710,470,955</b>

LSU  
Investment Summary  
For the Quarter Ended June 30, 2021

Fund Description	As of 7/1/2020	As of 9/30/2020		As of 12/31/2020		As of 3/31/2021		As of 06/30/2021	
	Value	Cost	Market Value	Cost	Market Value	Cost	Market Value	Cost	Market Value
<b>LSU Health Shreveport</b>									
<b>Current Funds</b>									
Cash/Sweeps S.	\$65,852,590	\$89,514,968	\$89,514,968	\$87,421,931	\$87,421,931	\$86,906,529	\$86,906,529	\$59,622,887	\$59,622,887
<b>Cash/Sweeps</b>	<b>\$65,852,590</b>	<b>\$89,514,968</b>	<b>\$89,514,968</b>	<b>\$87,421,931</b>	<b>\$87,421,931</b>	<b>\$86,906,529</b>	<b>\$86,906,529</b>	<b>\$59,622,887</b>	<b>\$59,622,887</b>
Treasury Notes	\$34,083,826	\$33,261,475	\$34,653,588	\$34,100,069	\$35,307,018	\$47,746,970	\$48,294,387	\$47,774,377	\$48,408,784
Agency Securities	\$7,100,869	\$5,106,045	\$5,083,210	\$5,083,539	\$5,037,247	\$11,354,512	\$11,196,303	\$11,332,414	\$11,306,177
Mortgaged Backed Securities	\$12,947	\$13,287	\$12,820	\$13,152	\$12,696	\$12,991	\$12,552	\$12,833	\$12,117
Municipal Bonds	\$7,584,432	\$8,209,340	\$8,326,354	\$13,083,545	\$12,090,806	\$19,843,870	\$19,595,649	\$19,808,682	\$19,736,053
Corporate Bonds	\$32,057,065	\$30,226,897	\$31,983,030	\$38,978,600	\$41,788,907	\$45,299,884	\$46,163,798	\$45,193,314	\$46,279,071
<b>Total</b>	<b>\$146,691,729</b>	<b>\$166,332,012</b>	<b>\$169,573,970</b>	<b>\$178,680,836</b>	<b>\$181,658,605</b>	<b>\$211,164,756</b>	<b>\$212,169,218</b>	<b>\$183,744,507</b>	<b>\$185,365,089</b>
<b>Endowment Funds</b>									
Cash/Sweeps	\$1,428,396	\$1,284,010	\$1,284,010	\$1,277,467	\$1,277,467	\$1,219,304	\$1,219,304	\$835,778	\$835,778
Equity Securities	\$16,804	\$7,650	\$17,245	\$7,650	\$17,570	\$7,650	\$17,872	\$7,650	\$17,848
Mutual Funds	\$67,050,161	\$60,529,377	\$69,560,847	\$63,376,325	\$75,276,849	\$64,551,193	\$75,584,518	\$65,395,397	\$78,578,072
<b>Total</b>	<b>\$68,495,361</b>	<b>\$61,821,037</b>	<b>\$70,862,102</b>	<b>\$64,661,442</b>	<b>\$76,571,886</b>	<b>\$65,778,147</b>	<b>\$76,821,694</b>	<b>\$66,238,825</b>	<b>\$79,431,698</b>
<b>Grand Total</b>	<b>\$215,187,090</b>	<b>\$228,153,049</b>	<b>\$240,436,072</b>	<b>\$243,342,278</b>	<b>\$258,230,491</b>	<b>\$276,942,903</b>	<b>\$288,990,912</b>	<b>\$249,983,332</b>	<b>\$264,796,787</b>
<b>LSU HCSD</b>									
<b>Current Funds</b>									
Cash/Sweeps	\$75,956,467	\$76,042,944	\$76,042,944	\$108,376,180	\$108,376,180	\$78,177,189	\$78,177,189	\$78,547,289	\$78,547,289
<b>Total</b>	<b>\$75,956,467</b>	<b>\$76,042,944</b>	<b>\$76,042,944</b>	<b>\$108,376,180</b>	<b>\$108,376,180</b>	<b>\$78,177,189</b>	<b>\$78,177,189</b>	<b>\$78,547,289</b>	<b>\$78,547,289</b>
<b>Other Funds</b>									
Cash/Sweeps	\$4,798,073	\$3,698,689	\$3,698,689	\$3,940,264	\$3,940,264	\$4,064,341	\$4,064,341	\$4,172,625	\$4,172,625
Money Market Accounts/Repos	\$8,892,074	\$8,896,108	\$8,896,108	\$8,900,115	\$8,900,115	\$8,904,111	\$8,904,111	\$8,908,564	\$8,908,564
Equity Securities	\$221,811	\$0	\$170,277		\$209,411		\$276,917		\$312,877
<b>Total</b>	<b>\$13,911,958</b>	<b>\$12,594,797</b>	<b>\$12,765,074</b>	<b>\$12,840,379</b>	<b>\$13,049,790</b>	<b>\$12,968,452</b>	<b>\$13,245,369</b>	<b>\$13,081,189</b>	<b>\$13,394,066</b>
<b>Grand Total</b>	<b>\$89,868,425</b>	<b>\$88,637,741</b>	<b>\$88,808,018</b>	<b>\$121,216,559</b>	<b>\$121,425,970</b>	<b>\$91,145,641</b>	<b>\$91,422,558</b>	<b>\$91,628,478</b>	<b>\$91,941,355</b>
<b>System Total</b>	<b>\$926,953,578</b>	<b>\$1,095,897,369</b>	<b>\$1,125,035,885</b>	<b>\$1,091,968,204</b>	<b>\$1,125,333,039</b>	<b>\$1,164,073,621</b>	<b>\$1,178,983,608</b>	<b>\$1,041,834,398</b>	<b>\$1,067,209,097</b>

\* Negative balance in the cash/Sweeps section of the current funds does not represent an actual negative bank balance, rather it represents a timing difference of the allocation of the current funds.

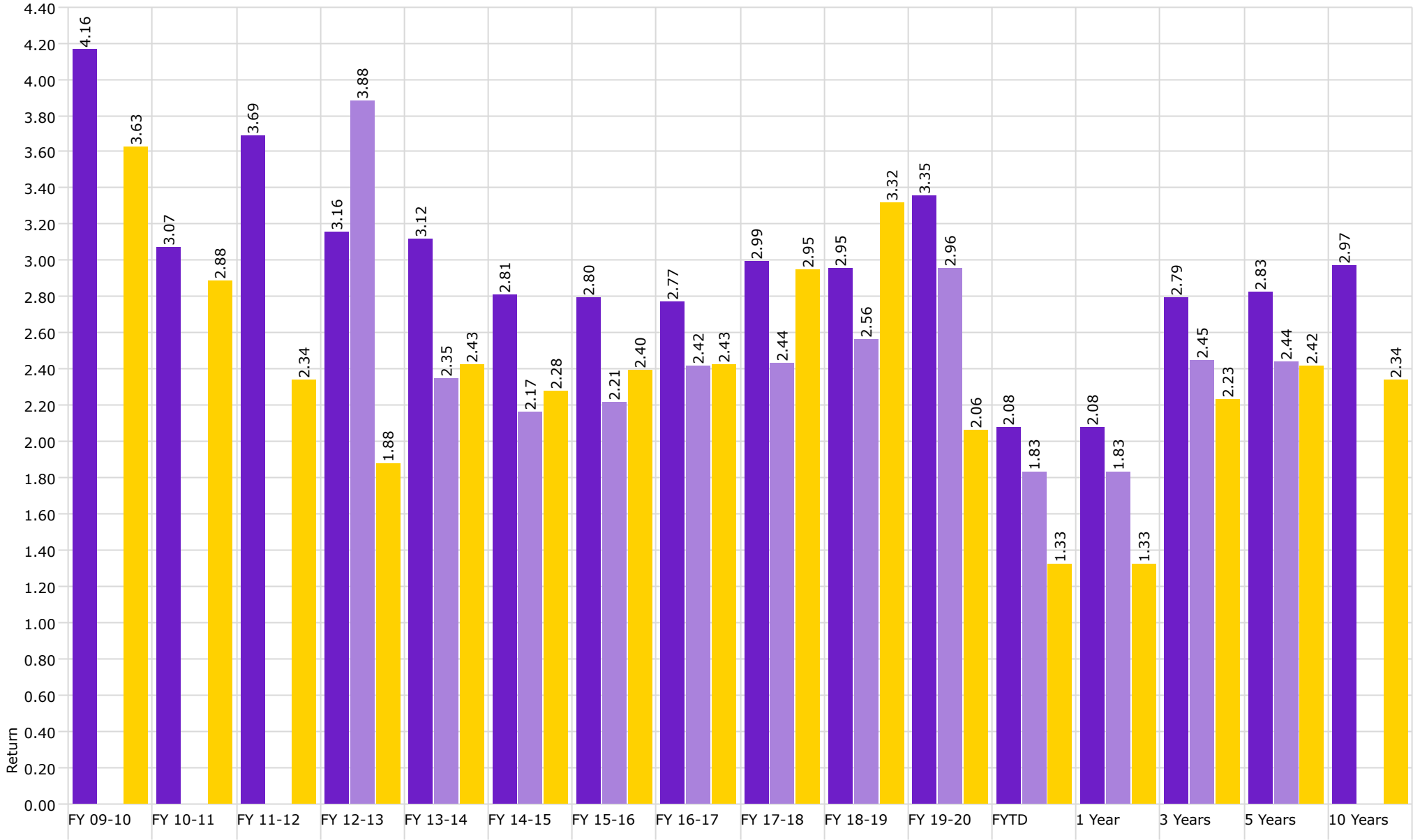
\*\* Small endowment funds at LSUS were moved to the LSUS Foundation to accommodate Workday.

\*\*\* LSU Paid Campuses include the following: LSU, LSU Ag Center, LSUA, LSUE, LSUS, LSU Health New Orleans, and the LSU Pennington Biomedical Research Center.

Disclaimer: Pursuant to PM-9, corporate bonds/notes only available for investment beginning 7-1-2011.  
Louisiana law provides for restrictions on maturity and allocation and may effect benchmark comparisons.

Investment Management Program  
 Non Endowed Accounts  
**Realized Yield**

As of 6/30/2021



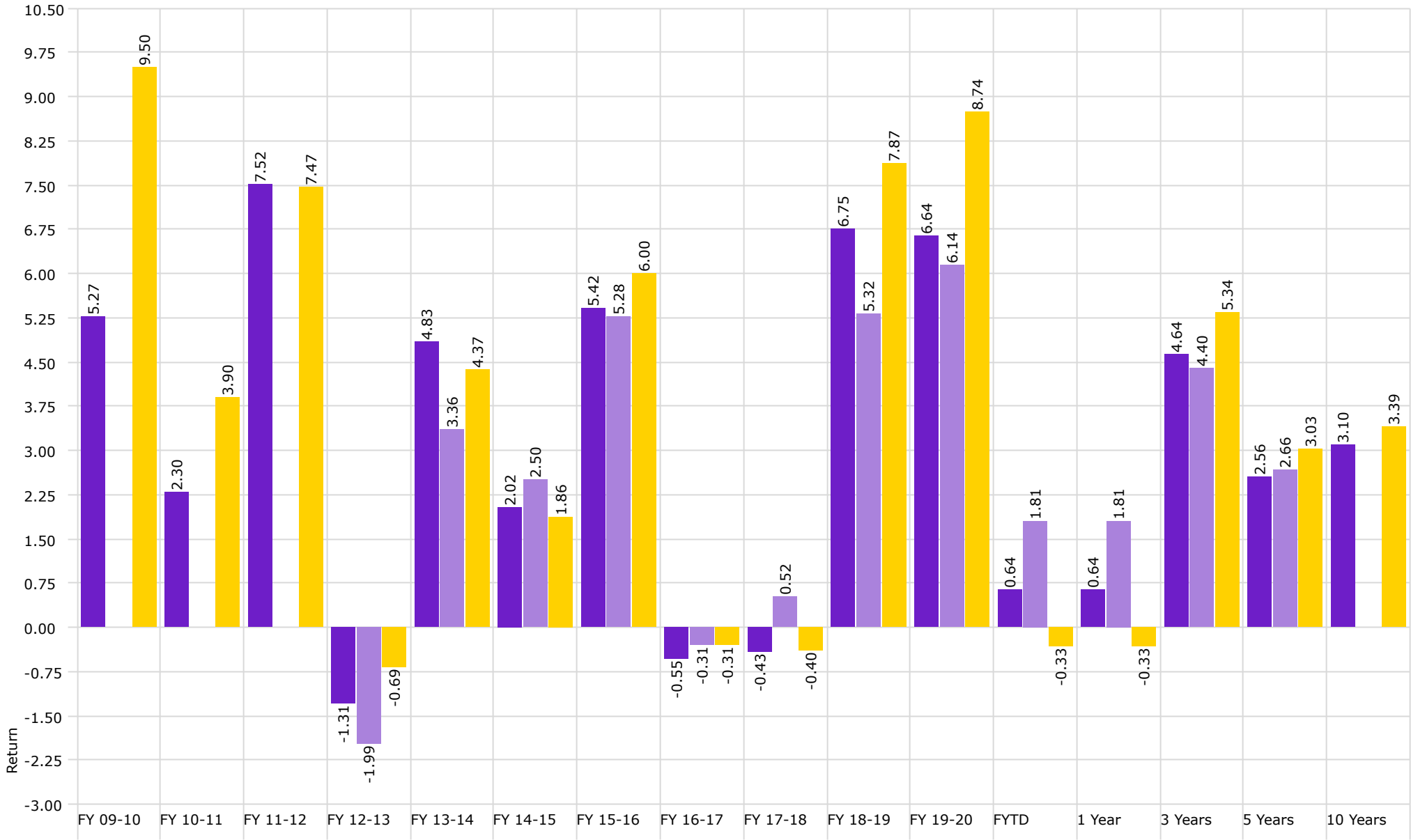
■ Non Endowed

■ Health Plan

■ Barclays Aggregate Bond Index

# Investment Management Program Non Endowed Accounts **Total Return**

As of 6/30/2021



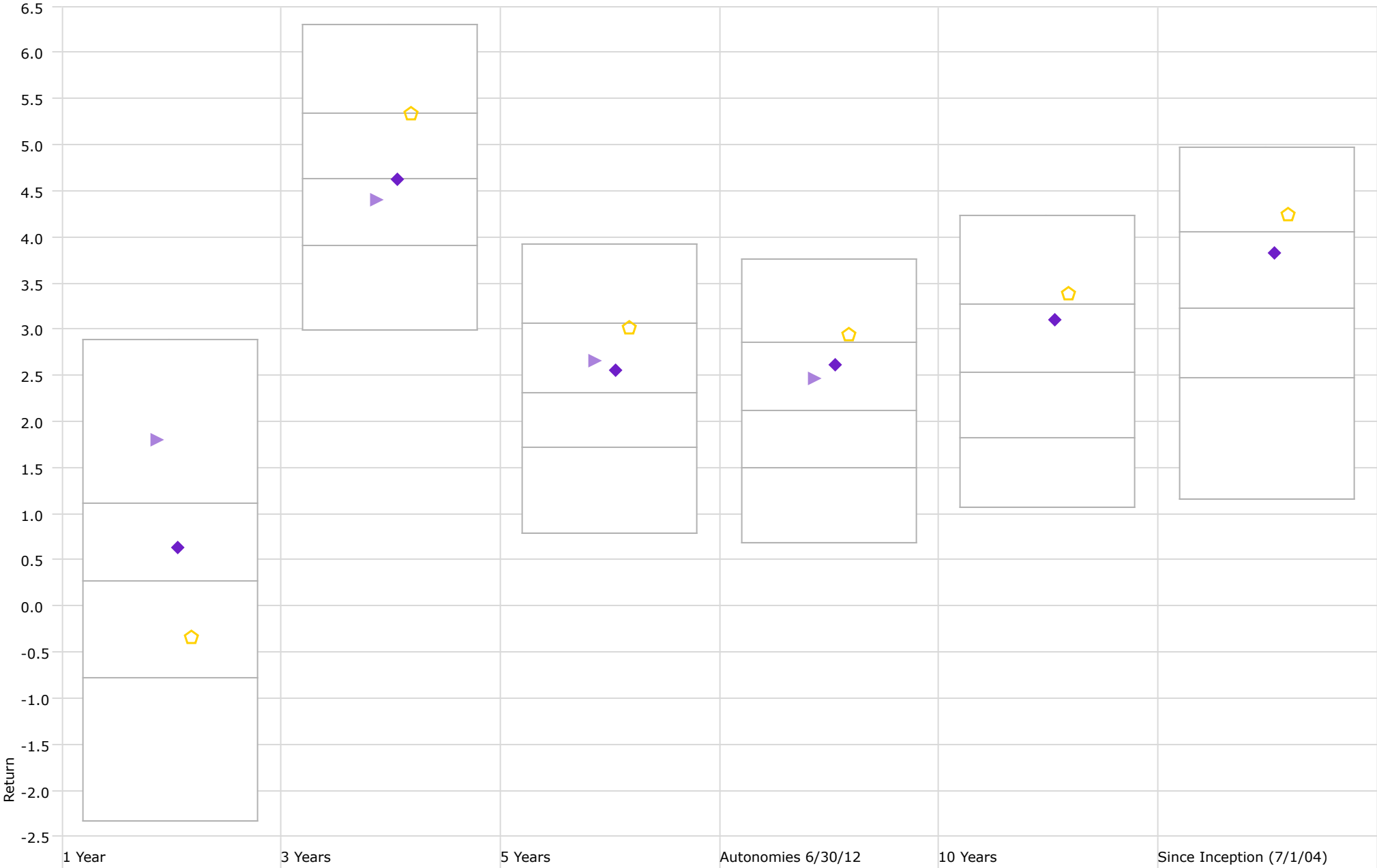
■ Non Endowed

■ Health Plan

■ Barclays Aggregate Bond Index

# Performance Relative to Peer Group

Peer Group (5-95%): All Managed Investments - U.S. - Intermediate Core Bond



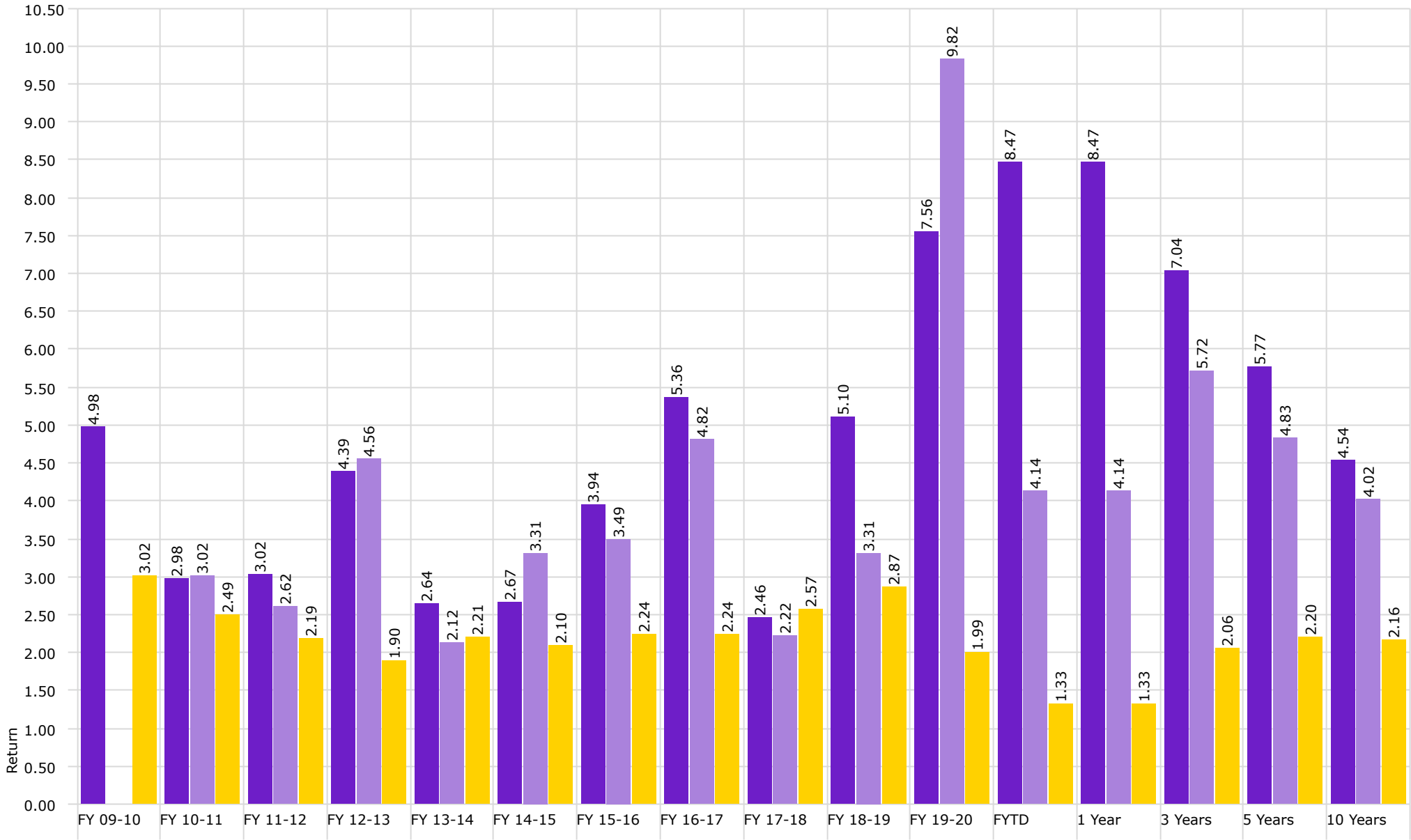
◆ Non Endowed

▶ Health Plan

⬠ Barclays Aggregate Bond Index

# Investment Management Program Endowed Accounts **Realized Yield**

As of 6/30/2021



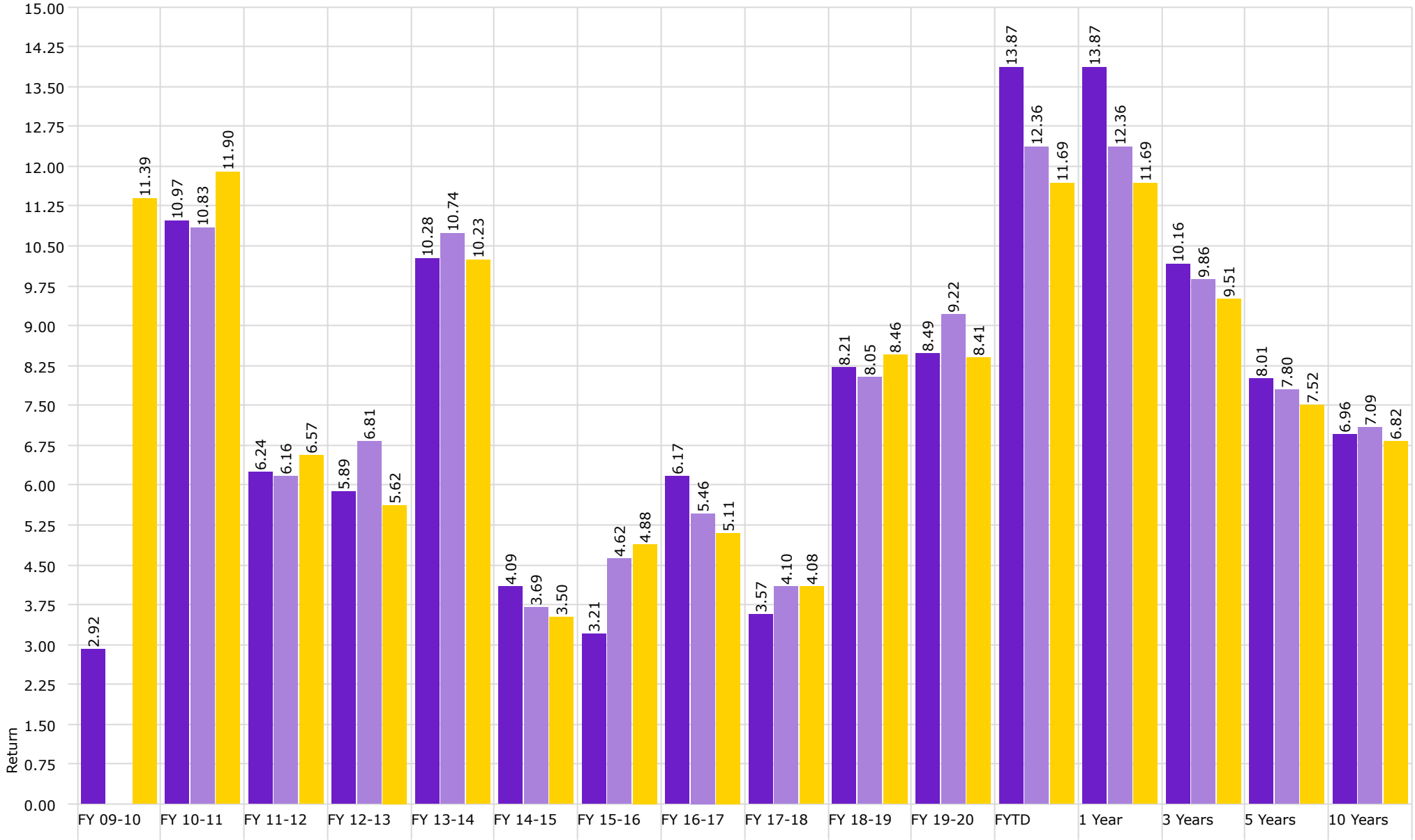
■ Endowment

■ Osher

■ Endowed Realized Yield

# Investment Management Program Endowed Accounts **Total Return**

As of 6/30/2021



■ Endowment

■ Osher

■ Endowed Benchmark