

Lightweight Automated Canned Pet Food Dispenser

Carrington Cain, Kathryn Carr, Aaron Esteve, Minh Nguyen, Jessica Pyles, Mikel Ricks, Jacob Smitherman



Objectives

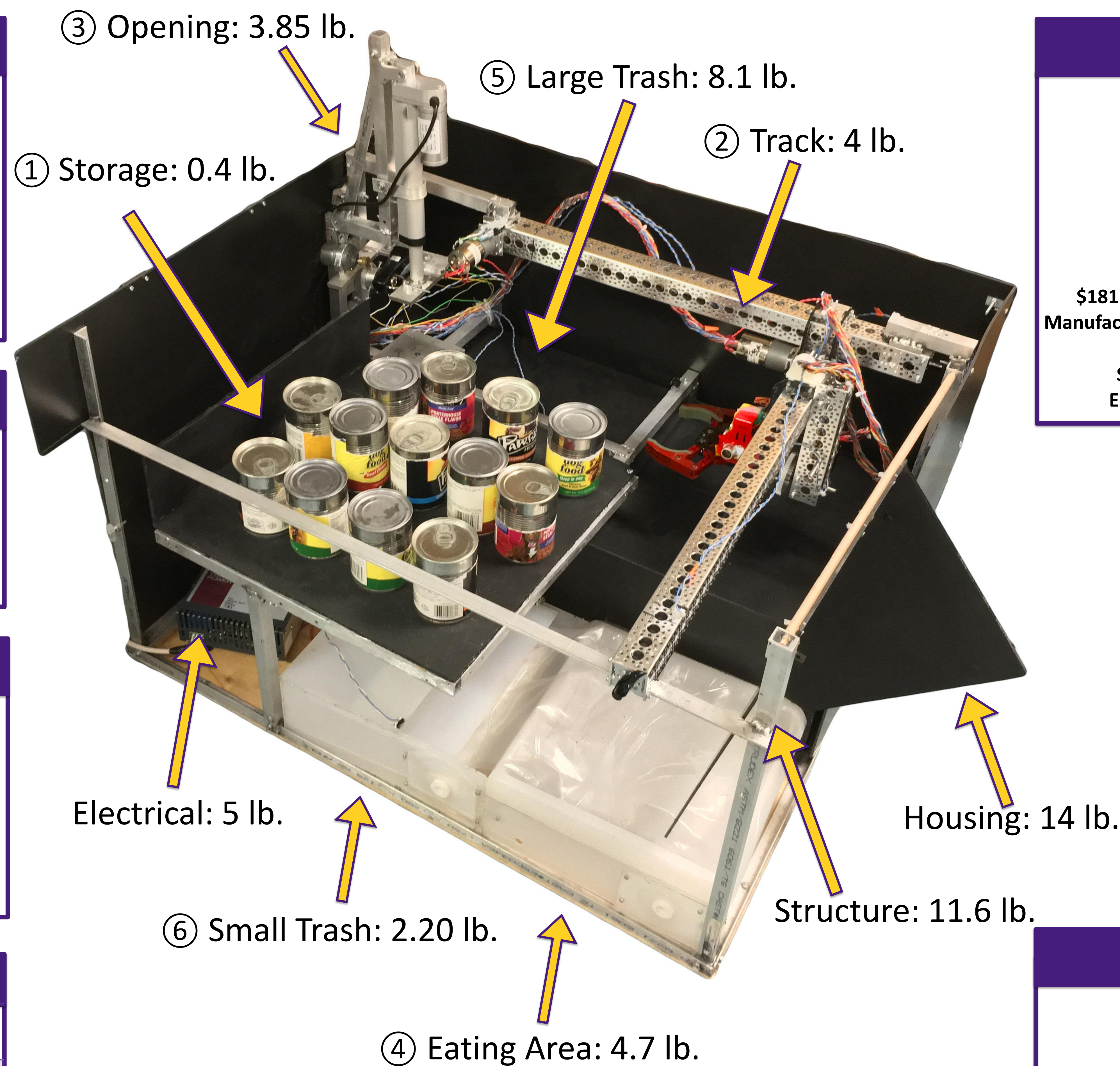
- Lightweight → 25 lbs
- Large Capacity → 21 Cans
- Compatible with major can sizes
- Open can and dispense food
- Dispose of waste (food and cans)
- Provide a clean surface for each serving

Engineering Specifications

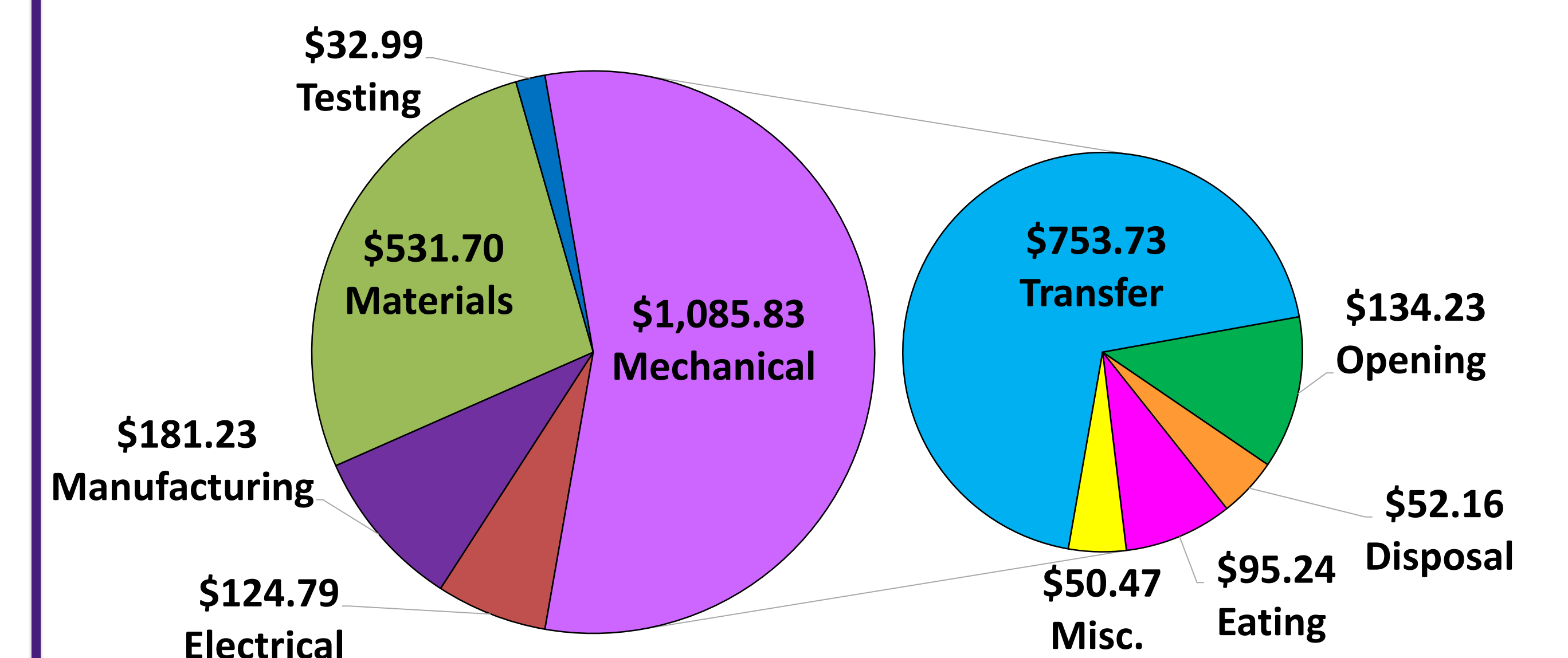
- Puncturing force of 20lbs
- Arduino controlled
- Timer based functions
- Distance sensors

Safety

- Low center of gravity provides stability
- No access to moving parts by pet
- Limit switches to prevent stalling motors
- Overvoltage/overcurrent prevention
- Sanitary



Budget Breakdown



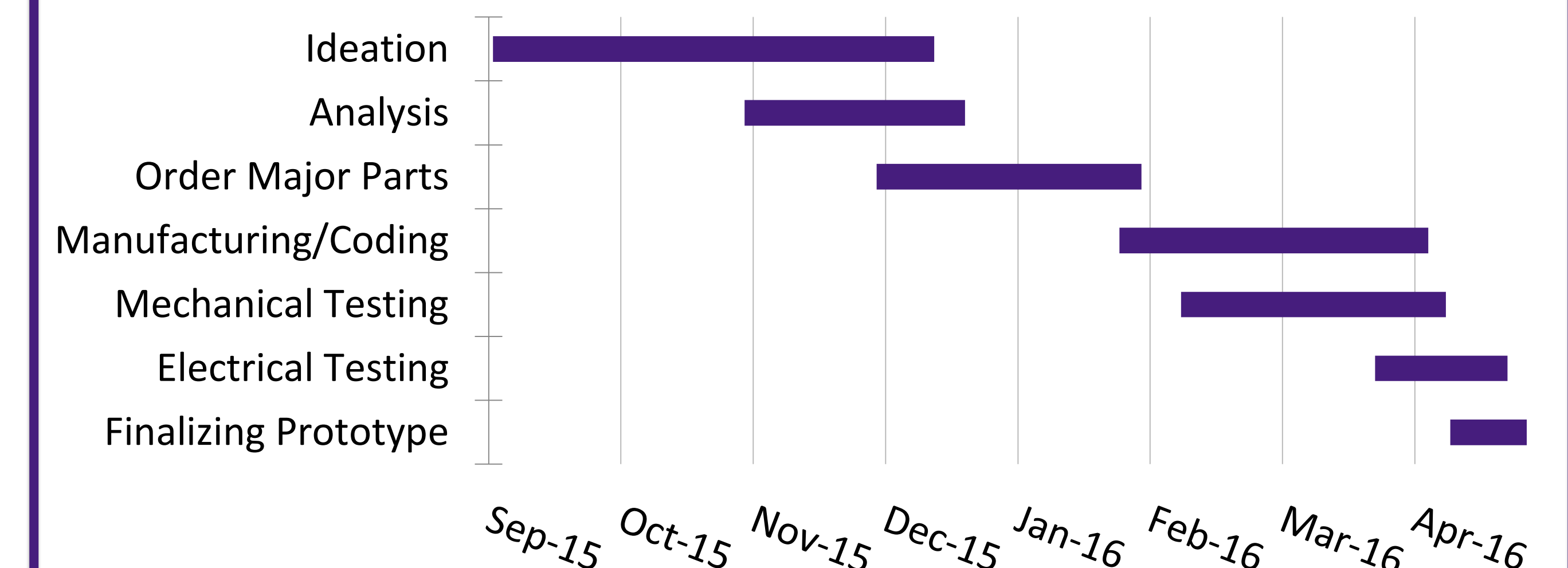
Comparison	2015	2016
Weight	187 lb	53.85 lb
Size (lwh) (ft)	3.3x3.1x2.8	2.9x2.4x2.5
Storage Capacity	7 cans	21 cans
Cycles	7 days	21 days
Efficiency	93.49%	98.23%

Sponsor: Brian Blades

Testing Results

- Weight: 53.85 lbs.
- Compatible Can Sizes: 3 oz., 5.5 oz., 13 oz.
- Average Food Yield: 98.23%
- Full Cycle Success rate: 75%

Timeline



Adviser: Dr. Ram Devireddy